

**ETT-N Heating Element, G 6/4", single phase, cord with plug**



**Main features**

Purpose	heating of static working fluid in hot water storage tanks and Thermal Stores incl. DUO; not designed to heat fluids in stainless steel tanks
Working fluid	drinking water, heating water, antifreeze fluid for heating systems and heat pumps
Installation position	horizontal, with cable gland downwards, element shall be completely immersed in working fluid

**This heating element is not designed to heat other fluids than listed, nor gases or vapours.**

**Design**

Heating element	electric, resistive, nickel-plated, with thermostatic head
Connection thread	G 6/4" M
Connection to mains	cord with connector to solar pump station CSE SOL

**El. wiring** 1/N/PE AC 230 V

Power supply voltage	230 V 50 Hz
IP rating	IP 40 by EN 60529
Protection class	I by EN 61140 ed.2

**Power supply cable** black

Cross section area	3 x 1,5 mm <sup>2</sup>
Length	5 m
Grommet	Pg 11
El. plug	connector to solar pump station CSE SOL

**Safety thermostat** capillary type

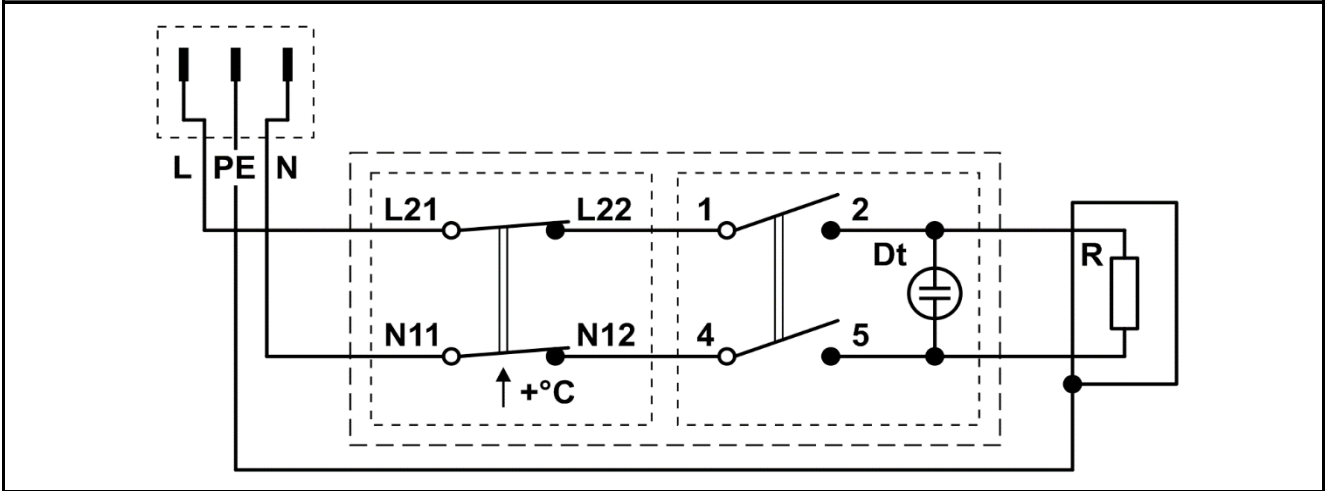
Switch-off temperature	99 +/-10 °C
Reset	manual, after temperature drops below 40 °C

**Materials**

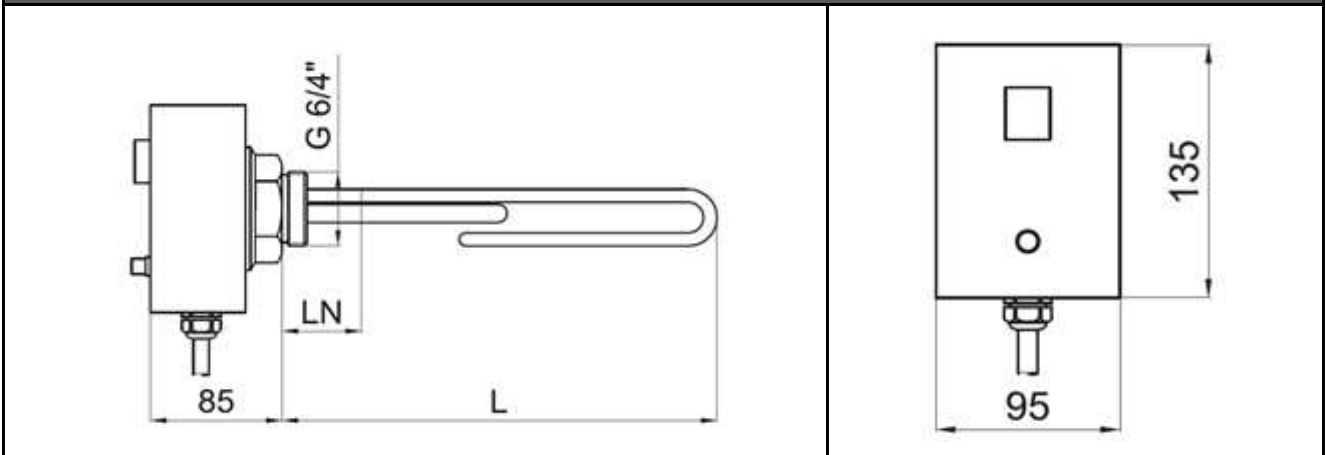
Heating element	nickel-plated copper
Heating element housing	PC, flame rating UL94-5V
Threaded hexagon	nickel-plated brass
Power supply cable	PVC

**ETT-N Heating Element, G 6/4", single phase, cord with plug**

**Wiring diagram**



**Dimensions**



Element type	Nominal output	Nominal current	Element length L	Non-heating end length LN	Tank minimal volume	Thermal store minimal volume	Code
ETT – N - 2,0	2 kW	8,7 A	350 mm	180 mm	RGC 120 H	PS 200, HSK	<b>16 492</b>
ETT – N - 3,0	3 kW	13,0 A	450 mm	180 mm	RBC 200	390, DUO 390	<b>16 493</b>

Heating fluid in direct contact with the heating element shall meet the relevant standards.

Hot water values shall not exceed the following limits:

pH	Total Dissolved Solids (TDS)	Calcium	Chlorides	Sodium	Iron
6.5-9.5	600 mg/l	40 mg/l	100 mg/l	200 mg/l	0.2 mg/l